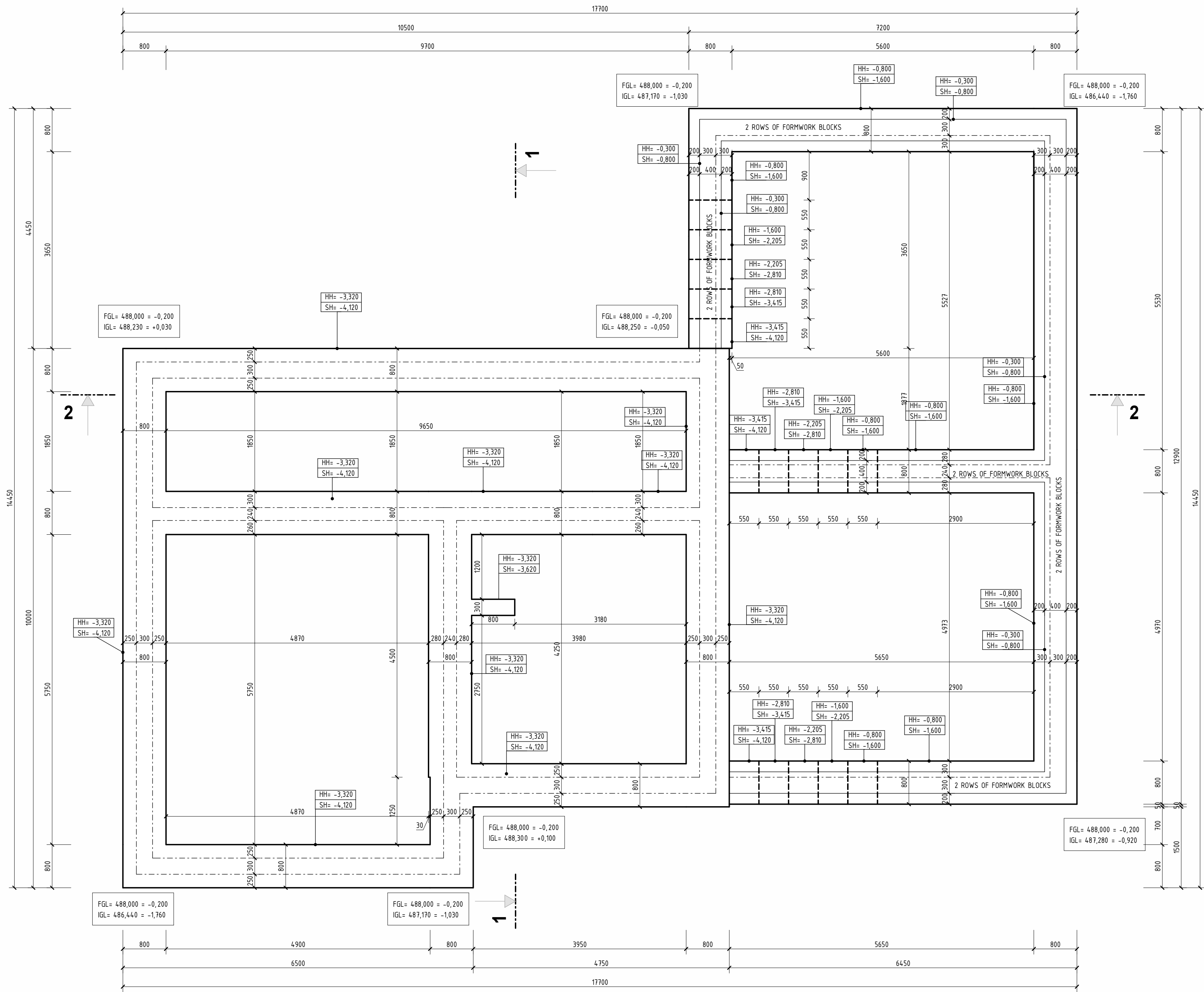
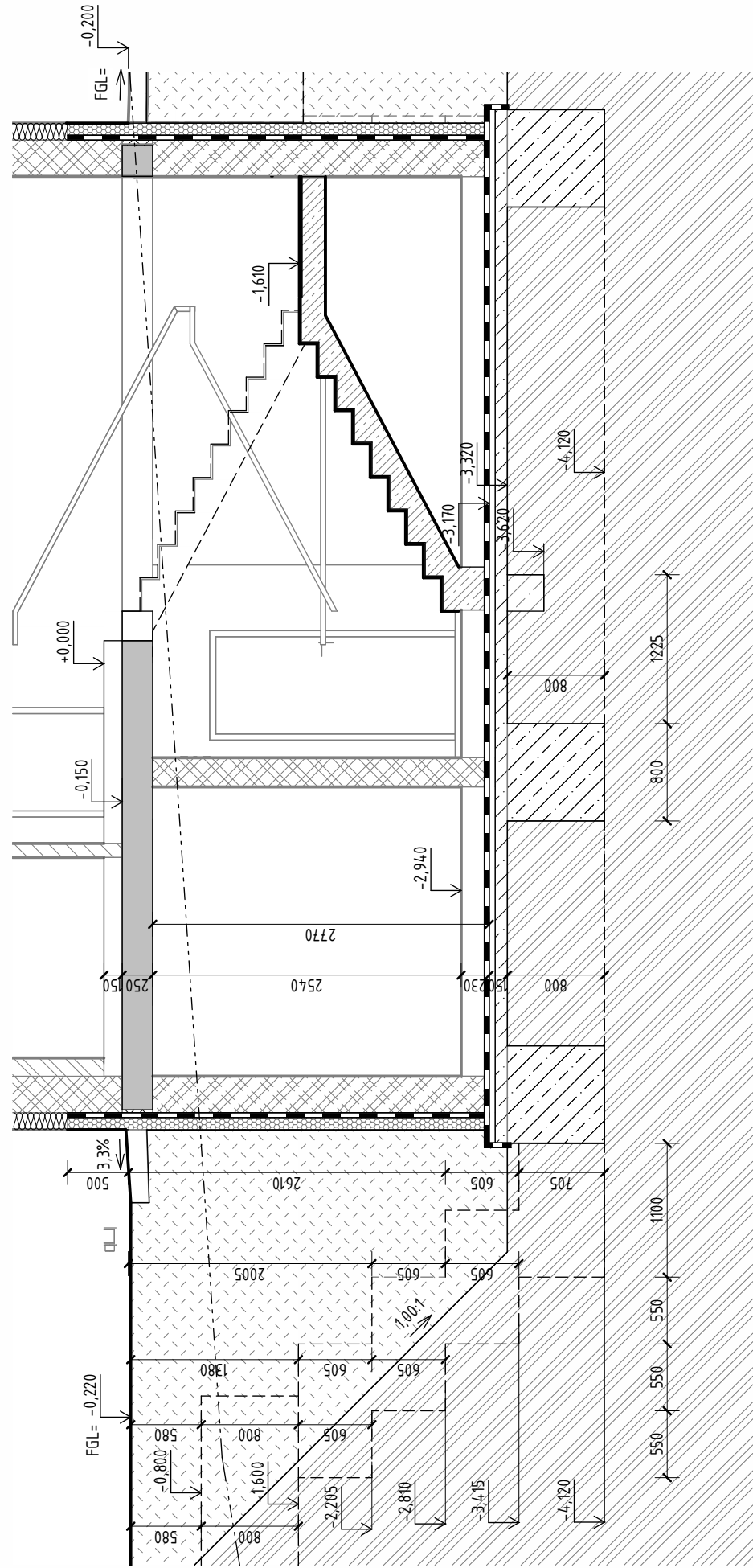


D.1.2 - 01 | FOUNDATION PLAN

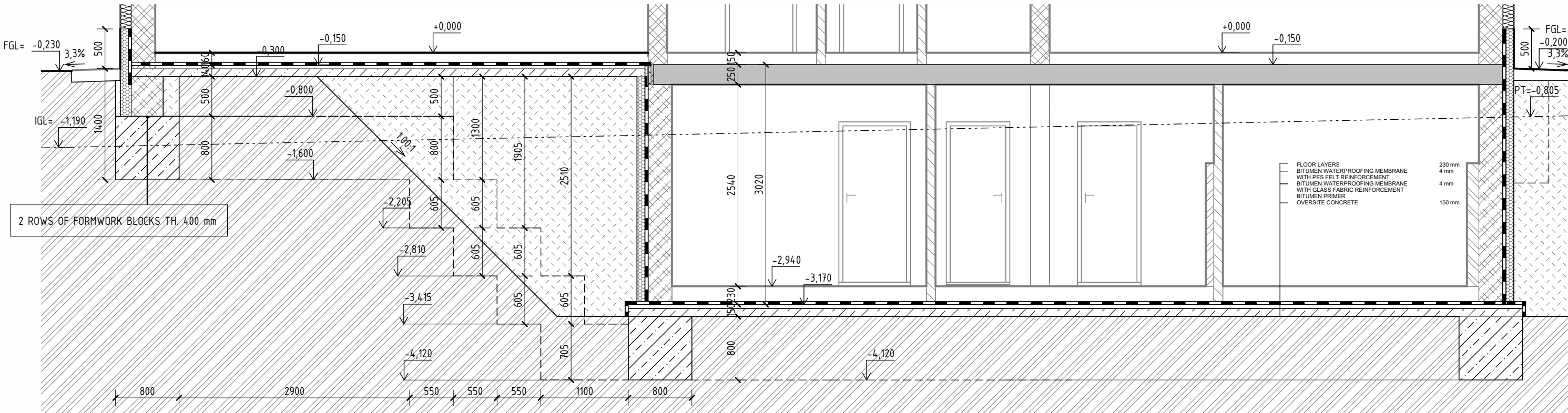
SCALE 1:50, FAMILY HOUSE WITH TATTOO STUDIO



SECTION 1 - 1



SECTION 2 - 2



LEGEND


LEGEND OF MATERIALS

- LOAD-BEARING MASONRY - GROUND CERAMIC BLOCK, STRENGTH CLASS P15/P10, GROUND CLAY BLOCK FOR 240 mm WALL THICKNESS, LAID WITH THIN-LAYER MORTAR
- LOAD-BEARING MASONRY - CONCRETE PERMANENT FORMWORK BLOCKS 30 - SHAPE LOCKS, FILLED WITH C16/20 CONCRETE. BLOCKS MADE OF PLAIN VIBRO-PRESSED CONCRETE, APPROXIMATE CONCRETE CONSUMPTION: 0.19 m³/m² (0.63 m³/m³).
- THERMAL INSULATION MADE OF EXPANDED POLYSTYRENE (EPS), THICKNESS ACCORDING TO LAYER COMPOSITION, STRAIGHT EDGE, DECLARED THERMAL CONDUCTIVITY COEFFICIENT $\lambda_D = 0.031 \text{ W}\cdot\text{m}^{-1}\cdot\text{K}^{-1}$, COMPRESSIVE STRENGTH AT 10% DEFORMATION $\sigma_{10\%} = 70 \text{ kPa}$ (DEPENDING ON LAYER COMPOSITION)
- THERMAL INSULATION MADE OF EXTRUDED POLYSTYRENE (XPS) WITH SMOOTH SURFACE, THICKNESS 110 mm, LAP JOINT, DECLARED THERMAL CONDUCTIVITY COEFFICIENT $\lambda_D = 0.036 \text{ W}\cdot\text{m}^{-1}\cdot\text{K}^{-1}$, COMPRESSIVE STRENGTH AT 10% DEFORMATION $\sigma_{10\%} = 300 \text{ kPa}$
- PLAIN CONCRETE WITH GLASS FIBRE MAT - CLASS AND EXPOSURE ACCORDING TO THE STRUCTURAL LAYER COMPOSITION
- ORIGINAL SOIL
- PENETRATION COATING - 2x SBS MODIFIED BITUMEN FELTS WITH GLASS FIBRE MAT, THICKNESS ACCORDING TO COMPOSITION

NOTES

- STRUCTURAL COMPOSITIONS - SEE STRUCTURAL COMPOSITION BOOK
- CONSTRUCTION DETAILS ARE LOCATED IN FOLDER D.12
- CONCRETE STRIPS AND INFILL OF PERMANENT FORMWORK SHALL BE MADE OF PLAIN CONCRETE C25/30 XA2
- OVERSITE CONCRETE MADE OF C25/30 XA2, THICKNESS 150 MM, WITH A REINFORCEMENT MESH 150/150/6 MM INSERTED INTO IT, OVERLAPS 450 MM
- THE FOUNDATION DESIGN IS BASED ON A BEARING CAPACITY OF FOUNDATION SOIL $R_d = 250 \text{ kPa}$
- AFTER EXCAVATION, THE FOUNDATION BED MUST BE INSPECTED AND APPROVED BY THE DESIGNER - STRUCTURAL ENGINEER, CONSTRUCTION SUPERVISOR OR RESPONSIBLE GEOLOGIST.
- IF THE CONDITIONS DO NOT MEET THE DESIGN PARAMETERS, THE FOUNDATION DIMENSIONS MUST BE RE-EVALUATED BASED ON ACTUAL CONDITIONS.
- RADON RISK HAS BEEN IDENTIFIED AS LOW, THEREFORE NO ANTI-RADON VENTILATION IS PROPOSED
- THE WATER LEVEL IS 10 m BELOW THE LEVEL OF THE FINISHED GROUND
- BEFORE STARTING EXCAVATION WORKS, THE INVESTOR OR CONTRACTOR MUST HAVE THE EXISTING UTILITY LINES IN AND AROUND THE CONSTRUCTION SITE MARKED BY THE NETWORK ADMINISTRATORS
- SPECIAL ATTENTION MUST BE GIVEN TO THE EXECUTION OF DETAILS, ESPECIALLY THE CONNECTION OF THE BASE STRUCTURE AND THE CONNECTION OF WINDOW AND DOOR OPENINGS TO THE EXTERNAL WALL TO PREVENT THERMAL BRIDGES.

±0,000 = 488,3 m.a.s.l., B.H.S
/ COORDINATE SYSTEM S-JTSK

COURSE	BACHELORS' THESIS				
DRAWN BY	ADELA MATUŠOVÁ				
SUPERVISED BY	PROF. ING. JITKA MOHLENIKOVÁ, PH.D.				
INVESTOR	-				
LOCATION	Krokočín, č. p. 730/2 a 728/č, okres Třebíč, Kraj Vysočina				
PROJECT TITLE	FAMILY HOUSE WITH TATTOO STUDIO				
BUILDING OBJECT	SO 01	PAPER FORMAT	B41x594 (A1)		
PART	D.1.1 ARCHITECTURAL BUILDING SOLUTION	DATE	20.5.2025		
DRAWING TITLE:	FOUNDATIONS PLAN		PROJ. PHASE	DPS	
		SCALE	1:50	DRAWING NO.	D.1.2-01